



Part A:
Meet the Root

Divide and Conquer

Directions: "Divide" words into prefixes and base words. Then "conquer" them by writing the meaning of the words.



| | prefix means | base is | word means |
|--------------|---------------|-------------|--------------------|
| 1. preheat | <u>before</u> | <u>heat</u> | <u>heat before</u> |
| 2. predict | _____ | _____ | _____ |
| 3. premixed | _____ | _____ | _____ |
| 4. preshrunk | _____ | _____ | _____ |
| 5. presoak | _____ | _____ | _____ |
| 6. prejudge | _____ | _____ | _____ |
| 7. precook | _____ | _____ | _____ |
| 8. prefix | _____ | _____ | _____ |
| 9. prewashed | _____ | _____ | _____ |
| 10. prepay | _____ | _____ | _____ |

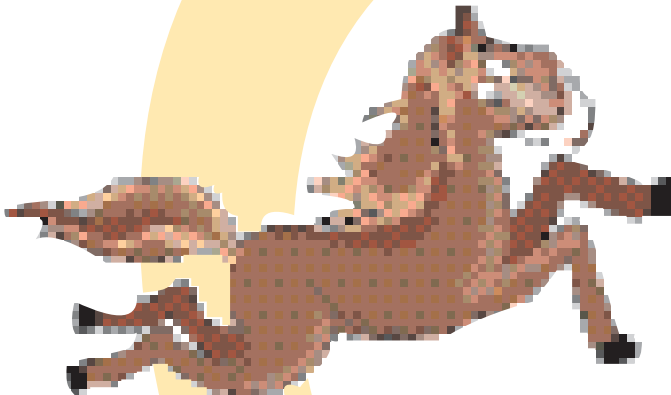
Part D:
Extend and Explore



Word Invention Riddles

Directions: Work with a partner to invent new *un-*, *re-*, and *pre-* words. Follow these directions.

1. Make up words using the prefixes *un-*, *re-*, and *pre-*.
2. Choose one of your invented words to create a riddle.
3. Write the invented word.
4. Write three clues to help others figure it out.
5. One of the clues must describe the meaning of the prefix.
6. Choose one invented word riddle to share with the class. See if they can figure it out!



Here is an example:

Clues:

1. It is an animal that gallops.
2. It gallops before breakfast.
3. It has a long tail.

Invented Word: prehorse

Now you try it!

Clues:

1. _____

2. _____

3. _____

Invented Word: _____